



**California's energy policies must address climate considerations**, but not at the expense of hardworking Latinos. Sustainability matters, but only if it is fair for everyone.

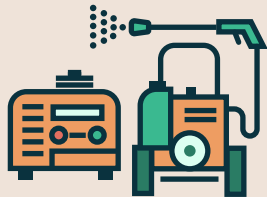
Stay informed about the impacts these energy policies have on **ALL** Californians.



Signed 09.23.20

**State of California Executive Order N-79-20**<sup>1</sup>

California has banned the sale of new gas-powered cars starting in 2035.



Signed 10.09.21

**State of California Assembly Bill 1346**<sup>2</sup>

As of 2028 the sale of new gasoline-powered generators and pressure washers will be banned in California.



Signed 10.09.21

**State of California Assembly Bill 1346**<sup>2</sup>

As of January 1, 2024, the sale of new gasoline-powered lawn equipment is prohibited in California.



Signed 04.28.23

**CARB Advanced Clean Fleets Regulation**<sup>3</sup>

All diesel-powered commercial trucks will be banned in California as of 2036.



Signed 06.27.24

**California ARB, Zero Emission Forklift Regulation**<sup>4</sup>

Under the rule, manufacturers cannot produce or sell Class IV and Class V LSI forklifts that run on propane, gasoline, or natural gas in California starting in 2026.



Proposed Law

Lawmakers in California are trying to ban natural gas ovens and stoves at the commercial and residential level.

1. Executive Department State of California Executive Order N-79-20 (2020). <https://www.gov.ca.gov/wp-content/uploads/2020/09/9.23.20-EO-N-79-20-Climate.pdf> 2. California Legislative Information Assembly Bill No.1346 (2021). [https://leginfo.legislature.ca.gov/faces/billNavClient.xhtml?bill\\_id=20210220AB1346](https://leginfo.legislature.ca.gov/faces/billNavClient.xhtml?bill_id=20210220AB1346) 3. California Air Resources Board Advanced Clean Fleets (2024). <https://ww2.arb.ca.gov/our-work/programs/advanced-clean-fleets> 4. California Air Resources Board California's forklifts to become cleaner and less polluting. <https://ww2.arb.ca.gov/news/californias-forklifts-become-cleaner-and-less-polluting>